

**GCGR / Glucagon Receptor Antibody (Extracellular Domain)**  
**Rabbit Polyclonal Antibody**  
**Catalog # ALS10183****Specification**

---

**GCGR / Glucagon Receptor Antibody (Extracellular Domain) - Product Information**

Application	IHC-P
Primary Accession	<a href="#">P47871</a>
Reactivity	Human, Monkey
Host	Rabbit
Clonality	Polyclonal
Calculated MW	54kDa KDa
Dilution	IHC-P~~N/A

**GCGR / Glucagon Receptor Antibody (Extracellular Domain) - Additional Information****Gene ID** 2642**Other Names**

Glucagon receptor, GL-R, GCGR

**Target/Specificity**

Human Glucagon Receptor. BLAST analysis of the peptide immunogen showed no homology with other human proteins.

**Reconstitution & Storage**

Long term: -70°C; Short term: +4°C

**Precautions**

GCGR / Glucagon Receptor Antibody (Extracellular Domain) is for research use only and not for use in diagnostic or therapeutic procedures.

**GCGR / Glucagon Receptor Antibody (Extracellular Domain) - Protein Information****Name** GCGR**Function**

G-protein coupled receptor for glucagon that plays a central role in the regulation of blood glucose levels and glucose homeostasis. Regulates the rate of hepatic glucose production by promoting glycogen hydrolysis and gluconeogenesis. Plays an important role in mediating the responses to fasting. Ligand binding causes a conformation change that triggers signaling via guanine nucleotide-binding proteins (G proteins) and modulates the activity of down-stream effectors, such as adenylate cyclase. Promotes activation of adenylate cyclase. Besides, plays a role in signaling via a phosphatidylinositol-calcium second messenger system.

**Cellular Location**

Cell membrane; Multi-pass membrane protein. Note=Is rapidly internalized after ligand-binding

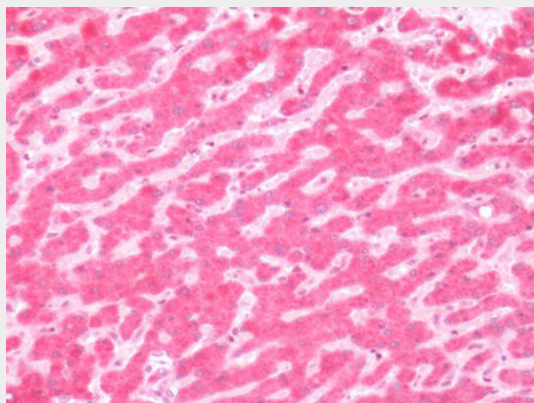
**Volume**  
100 µl

### **GCGR / Glucagon Receptor Antibody (Extracellular Domain) - Protocols**

Provided below are standard protocols that you may find useful for product applications.

- [Western Blot](#)
- [Blocking Peptides](#)
- [Dot Blot](#)
- [Immunohistochemistry](#)
- [Immunofluorescence](#)
- [Immunoprecipitation](#)
- [Flow Cytometry](#)
- [Cell Culture](#)

### **GCGR / Glucagon Receptor Antibody (Extracellular Domain) - Images**



Human Liver: Formalin-Fixed, Paraffin-Embedded (FFPE)

### **GCGR / Glucagon Receptor Antibody (Extracellular Domain) - Background**

G-protein coupled receptor for glucagon that plays a central role in the regulation of blood glucose levels and glucose homeostasis. Regulates the rate of hepatic glucose production by promoting glycogen hydrolysis and gluconeogenesis. Plays an important role in mediating the responses to fasting. Ligand binding causes a conformation change that triggers signaling via guanine nucleotide-binding proteins (G proteins) and modulates the activity of down-stream effectors, such as adenylate cyclase. Promotes activation of adenylate cyclase. Besides, plays a role in signaling via a phosphatidylinositol-calcium second messenger system.

### **GCGR / Glucagon Receptor Antibody (Extracellular Domain) - References**

Macneil D.J., et al. *Biochem. Biophys. Res. Commun.* 198:328-334(1994).  
Lok S., et al. *Gene* 140:203-209(1994).  
Menzel S., et al. *Genomics* 20:327-328(1994).  
Buggy J.J., et al. *Diabetes* 46:1400-1405(1997).  
Ruckert C., et al. *J. Biol. Chem.* 281:2306-2316(2006).